

# SIRIUS for Day & Night 24 hours Surveillance



**SIRIUS**

3-8mm F0.95 Aspherisal Lens

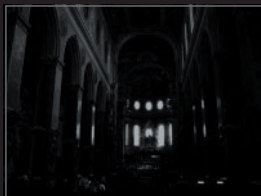
**Day & Night vari-focal lens**

**SPACECOM**  
CCTV LENSES

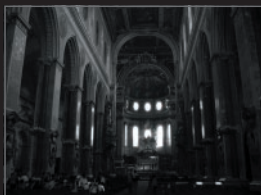
The ordinary lenses produce blurred image when the focus is shifted under the different wave lengths between visible rays and infrared rays. SIRIUS is designed to reduce the focus shift considerably. Therefore, SIRIUS is able to display clear image during Day & Night.

## Bright! F0.95 Aspherical Lens

SIRIUS loaded High Performance Aspherical Lens F0.95. Therefore get brighter image about 200% than ordinary F1.4 Lenses! It is optimum to the Night time surveillance.



F1.4 Lens



SIRIUS F0.95

## Convenience to adjustment of zoom position! Focal length scale attachment!

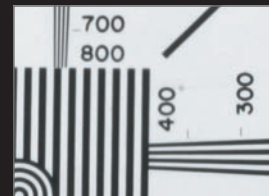
SIRIUS has standard equipment which is "Focal length scale". This is very convenience to adjust of zoom position.



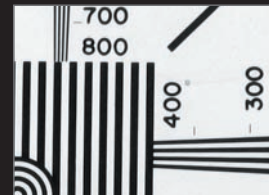
SIRIUS  
Focal length scale attachment

## High Quality image on wide angle The optical design which wide angle was most important of vari-focal lens!

SIRIUS has focal length 3-8mm, 2.7 times zoom Vari-Focal lens. In fact, we have some data which are 83% of clients using for wide angular side. Especially we increase design of wide side for SIRIUS. We improve the resolution power 20% up than old type.



Usual Lens



SIRIUS

## Suit for Day & Night continuous Surveillance

Please use our reliable SPACECOM lens "SIRIUS" in the place where request for Day & Night continuous Surveillance. Such as the Bank, Lobby of Hall, the entrance of apartment, a parking lot, an emergency stairs, the public facility and convenience stores, e.t.c.



Usual Lens



SIRIUS

**SPACE inc.**

1-21-47, Iguchi, Mitaka-City, Tokyo 181-0011 JAPAN  
TEL +81-422-31-8180 FAX +81-422-31-8220 E-mail info@spacecom.co.jp

[www.spacecom.co.jp](http://www.spacecom.co.jp)